

Tour code: **BPac11  
2024**  
Guaranteed departures  
Small group safari maximum: **8 travellers**  
Travel through: **Botswana**  
Safari length: **11 days**



## BOTSWANA BAOBABS & OKAVANGO DELTA

There are few wildlife experiences in the world like a week spent in the Botswanan wilderness. This classic itinerary offers a lodge and luxury camping combination safari. The lodges are beautiful, comfortable & make for a great adventure safari though the world famous parks

**DEPARTS:** MAUN on Saturday at 14:00pm  
**ENDS:** VICTORIA FALLS on Tuesday @ ±08:00am

### Highlights

- \* Okavango delta – mokoro excursion
- \* Moremi Game Reserve – game drives
- \* Savuti – game drives
- \* Chobe National Park – game drive and river cruise



## SAFARI GRADE: CLASSIC

**Overnight** The accommodation throughout this classic journey is of 3+ star style and are chosen not only for their service and comfort level but also for their wonderful locations and local wildlife viewing opportunities. All rooms have private en suite facilities. For the 2 nights in central Chobe NP, we stay in mini meru tents. Each tent has twin camp beds with linen and en suite chemical toilet and bucket shower with hot water off the fire.

**Meals** 10 breakfasts, 4 lunches and 4 dinners are included. All of which are provided by the lodges, or mobile camp at which we are staying, except 2 lunches provided by the guides. Due to travel arrangements or game viewing activities, the included lunches will be picnic lunches. Where meals are not included there will be an opportunity to buy a meal en route or at the restaurant in the evening.

**Transport** for the entire safari you travel in a purpose built 4WD Land Cruiser with 12 forward facing seats and trailer for luggage. It has a solid roof and back which provides protection from the sun, and dust. The Land Cruiser has 12 individual seats in 4 rows of 3 seats, but this tour is limited to a **maximum of 8 clients** so that everyone has a "window" seat.

**Non participation** this is an adventure tour, and as such please expect to get involved. Where there are porters, they'll help you, otherwise you'll need to carry your own bag. Included meals are all lodge or camp provided. If you have a particular interest, please let your safari leader know, and he/she will endeavour to make your journey more rewarding.




## Day 1 MAUN [lodge - - -]

This safari starts at the hotel in Maun where we have an evening meal at a local restaurant (own expense).

*Day 1: Dinner will be an own expense meal at a local restaurant*

**Includes:** N/A

**Overnight:** [Sedia Hotel](#) – standard twin rooms with en suite facilities. Swimming pool, bar, restaurant, telephone. Wifi available in public areas only. 



Sedia Hotel is managed by local citizens and employs 69 locals, of which more than half are women. The hotel supports various Maun based organisations through an impact fund, for example Sedia Junior Secondary School. The hotel also has a glass recycling project, and all its waste is separated according to type of waste for recycling purposes. The restaurant serves local Botswana beef, and Okavango bream.



## Day 2 – 3 OKAVANGO DELTA [lodge B - -]

The Okavango Delta is an extraordinary wilderness environment that needs no introduction. A vast wetland paradise in the center of the Kalahari Desert, fed by rivers from Angolan highlands and seasonal rains. It is an ever changing kaleidoscope of waterways, reed beds, islands and dry land that grows and shrinks each season like a living creature itself, supporting a breathtaking range of wildlife. Hippos, elephants, lions and buffalo, the shy Sitatunga antelope and the abundant birdlife – a truly amazing wildlife experience.

We drive around the Okavango through small villages, skirting the extremes of the flood to Etsha, where we follow thick sands tracks into the Okavango Delta panhandle. Your room overlooks a beautiful lagoon and you'll enjoy a morning mokoro excursion and a sunset motorboat cruise.

*Day 2-3: Breakfast will be provided by the lodge*


*Day 2-3: Lunch will be own expense at the lodge*

*Day 2-3: Dinner will be own expense at the lodge*

**Includes:** Concession entry Okavango Delta and mokoro excursion.

**Distance/time:** ±310km, 5h00 actual driving time, as we skirt the Okavango the road can be very potholed, so we expect a travel day of ±6h00.

**Optional Activities:** Helicopter flight over the Delta (own expense).

**Overnight:** 2 nights Okavango Delta, [Guma Lagoon](#) – twin en-suite canvas chalets. Swimming pool, bar, restaurant. Wifi available. 



Guma Lagoon is owner-managed and employs 36 permanent staff and 50 mokoro polers from the local community. The camp sponsors 3 local schools with teaching equipment and mentors students into the guiding and hotel industry. They grow their own vegetables, recycling their kitchen waste for compost and use solar energy for 80% of their power.





#### Day 4 - 5 **MOREMI / MABABE** [serviced camp – meru tents BLD]

Moremi Game Reserve is the jewel of Botswana and arguably one of the best wildlife viewing destinations in Africa. Moremi's wide variety of habitats makes it a birdwatcher's paradise.

Surrounding Moremi is a vast wilderness consisting of open grasslands and forest and abundant wildlife and our camp is set on a concession bordering the east of the reserve. Our days are spent on open 4WD game drives in Moremi GR and on the wildlife concession along the Mababe River watching the abundant wildlife including elephant, hippo, buffalo, lion & other game, both in Moremi Game Reserve and in the private concession reserves adjoining the park.

*Day 4: Breakfast provided by the lodge*

*Day 4: Lunch provided by tour leaders with the help of the group*


*Day 5: Breakfast provided by the tented camp*

*Day 5: Lunch provided by the tented camp*

*Day 4-5: Dinner will be a set meal provided by the tented camp*

**Includes:** Entrance fee to Moremi Game Reserve, morning & afternoon game drives in an open 4WD vehicle.

**Distance/time:** day 4: ±420km, 7h00 actual driving time but it's a rough 4x4 route, and with a lunch stop we expect a full travel day of ±9h00 subject to sunset time.

**Overnight:** Serviced Camping, meru tents – twin camp beds with linen and en suite chemical toilet and bucket shower with hot water off the fire. A towel will be provided. No Wifi. 



#### Day 6 – 7 **SAVUTI** [serviced camp – meru tents BLD]

We head north from Moremi to the renowned Savuti section of the Chobe National Park. This is an excellent area for big predators with frequent sightings of lion and leopard, elephant and plains game. We spend our time on game drives through the dramatic open plains dotted with Acacia, and along the Savuti channel where we hope to see the lions and hyenas that make Savuti an outstanding wildlife destination. We overnight in our serviced tented camp. After dinner in our dining tent, fall asleep to the sounds of the African bush.

*Day 6: Breakfast provided by the lodge*

*Day 6: Lunch provided by the mobile camp*

*Day 6: Dinner provided by tour mobile camp*


*Day 7: Breakfast provided by the mobile camp*

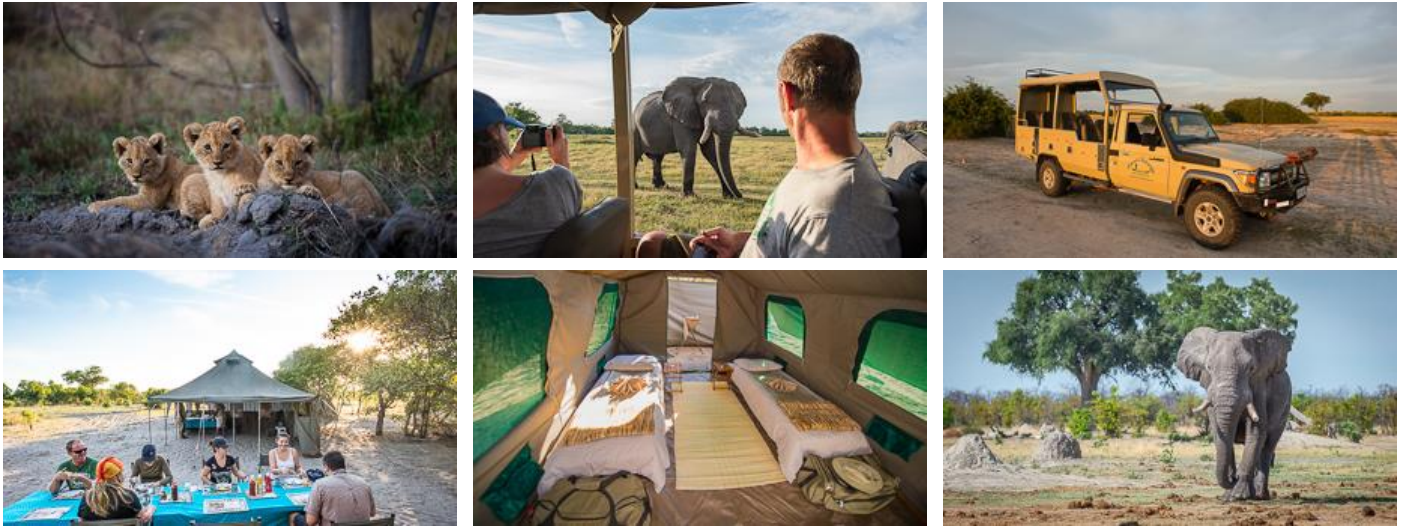
*Day 7: Lunch provided by the mobile camp*

*Day 7: Dinner provided by tour mobile camp*

**Includes:** Entrance fees, morning and afternoon game drives in open 4WD game viewing vehicle.

**Distance/time:** ±150km, which involves game drive and transit so we expect a long travel day of ±08h00.


**Overnight:** Serviced Camping, meru tents – twin camp beds with linen and en suite chemical toilet and bucket shower with hot water off the fire. A towel will be provided. No Wifi. 



**Day 8 – 9      CHOBE NATIONAL PARK** [lodge B - -]

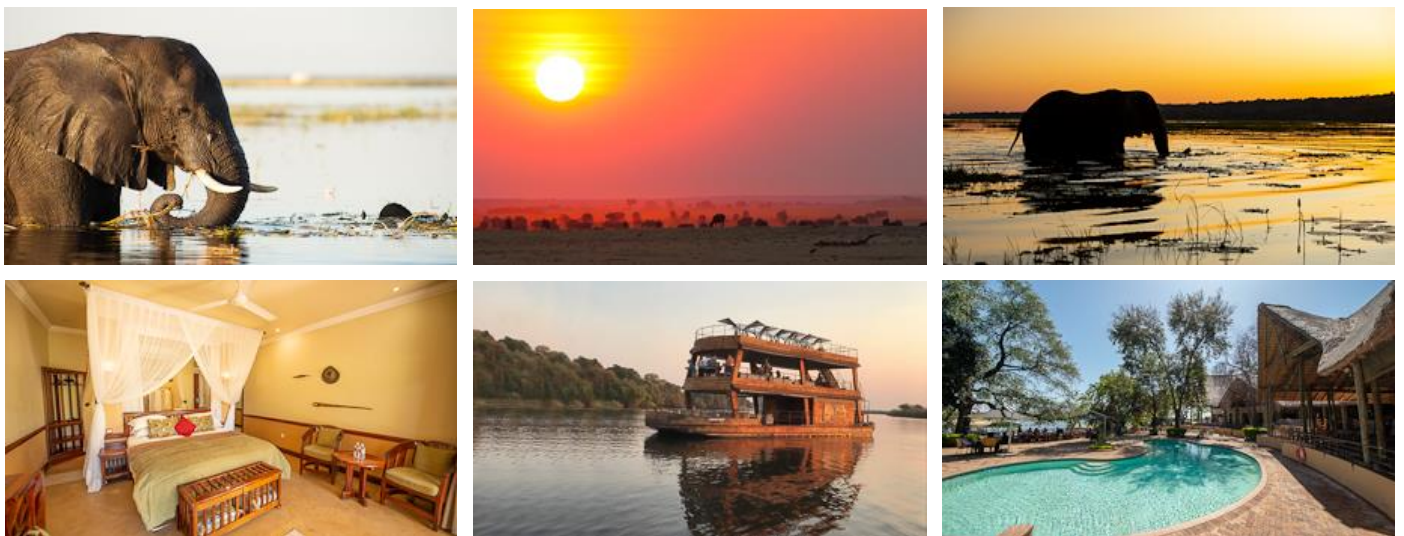
Our next destination is Chobe National Park. We depart Savuti and head north through the remote wilderness of Botswana to the small town of Kasane and our lodge on the banks of the Chobe River. The following day we explore the national park on a morning game drive and spend the rest of the day on the river, enjoying lunch on our cruise boat with spectacular wildlife viewing. This is possibly the most satisfying and relaxing game viewing activity in Southern Africa. We get close to the herds of elephants, and have amazing sightings of crocodile, hippo, fish eagle and many more. As the sun sets, we head out of the park with some amazing wildlife and sunset photographs.

- Day 8: Breakfast provided by the mobile camp*
- Day 8: Lunch will be an own expense meal*
- Day 8: Dinner will be an own expense meal at a local restaurant*
- Day 9: Breakfast provided by the lodge*
- Day 9: Lunch will be an own expense meal*
- Day 9: Dinner will be an own expense meal at a local restaurant*

- Includes:** Entrance Fees, game drive & Chobe River Boat Cruise.
- Distance/time:** ±220km, again it's part game drive and part transit travel, so we expect a long travel day of ±06h30.
- Overnight:** [Chobe Safari Lodge](#) – twin rooms with en-suite facilities, swimming pool, restaurant & bar. Wifi available. 



Chobe Safari & Bush Lodge is Motswana owned and all 260+ staff are employed from the local community. The lodge supports the local community as far as possible in, employment, purchasing food locally, and assisting in looking after 31 children from Kachilauw Primary School, a school for special needs children.



## Day 10 VICTORIA FALLS, ZIMBABWE [lodge B - -]

We leave Botswana behind and cross into Zimbabwe and make our way to Victoria Falls. The mighty Zambezi River thunders 100m over the gorge creating a magnificent spectacle. The spray from the waterfall sustains a rainforest surrounding the falls which is abundant with birdlife and protected in a National Park. We explore the Victoria Falls on foot with a local guide bringing the Falls to life with tales of the explorers of these ancient lands.

*Day 10: Breakfast will be provided by the lodge*


*Day 10: Lunch is an own expense meal*

*Day 10: Dinner is an own expense meal at a local restaurant*

**Includes:** Entrance fees to Victoria Falls.

**Distance/time:** ±85km, 1h30 actual driving time. It's not a long way, but the border can be busy and slow so we anticipate a total travel day of ±3h00.

**Optional Activities** Sunset cruises, scenic flights & many more.

**Overnight:** [PheZulu Guest Lodge](#), twin rooms with en-suite facilities. Swimming pool,  restaurant, bar and telephone. Wifi available.



Bayete & Phezulu Guest Lodges are 100% Zimbabwean owned. The lodges catch rainwater in tanks for use and grey water is used in the gardens. Food is sourced locally as far possible & all waste is recycled. The lodges support Children in the Wilderness, Greenline Africa and are part of Green Tourism.



## Day 11 VICTORIA FALLS – TOUR ENDS [- B - -]

There is time for one of the many optional adventure activities (own expense) before the tour ends.

*Day 11: Breakfast provided by the lodge*

*Day 11: Lunch will be an own expense meal*

*Day 11: Dinner own expense*

**Includes:** N/A

**Distance/time:** N/A

**Overnight:** N/A

**Please Note:** The distance and travel times quoted above are an estimate only, and subject to local road conditions and animal sightings!

**Special Interest:** Botswana is considered Southern Africa's premier game viewing destination. The remote wilderness, limited access for visitors and abundant game make for an exceptional wildlife safari.

**Sustainable Tourism:** A Botswana guide travels with us through the National Parks. This ensures employment for local people and direct benefits for the community from tourism. The local guides are highly knowledgeable so please ask plenty of questions, you'll be amazed at what you can learn.

## 2024 PRICES AND DEPARTURE DATES:

**RACK Price:** (valid Jan 2024 – Dec 2024)

**BPac11 NZD 6,525 pps**

**Single tent supplement: NZD 1,880 pp** Due to the group size and the lodge room allocations, if you are travelling on your own there is a price supplement

### 2024 DEPARTURE DATES

Departs	Ends
MAUN	VICTORIA FALLS
Saturday at 14:00pm	Tuesday at 08:00am
23-Mar-24	02-Apr-24
<b>20-Apr-24</b>	<b>30-Apr-24</b>



**SUNWAY SAFARIS** GSA Representative: Indafrica Travel [www.indafrica.co.nz](http://www.indafrica.co.nz) Phone 03 442 4067

NZ Travel Agents & General Enquiries: [newzealand@sunway-safaris.com](mailto:newzealand@sunway-safaris.com) or [info@indafrica.co.nz](mailto:info@indafrica.co.nz)

**INDAFRICA**  
Africa : India : Safaris & Adventures

08-Jun-24	18-Jun-24
29-Jun-24	09-Jul-24
<b>13-Jul-24</b>	<b>23-Jul-24</b>
<b>03-Aug-24</b>	<b>13-Aug-24</b>
<b>24-Aug-24</b>	<b>03-Sep-24</b>
<b>21-Sep-24</b>	<b>01-Oct-24</b>
12-Oct-24	22-Oct-24
26-Oct-24	05-Nov-24
16-Nov-24	26-Nov-24

\* **Bold dates** are guaranteed departures; all other dates are guaranteed from 4 clients.

#### Airport Transfers

NZD 53pp per way

#### BPac09 Pre Tour Accommodation (Maun) - if required

Sedia Hotel Standard Room Ensuite: NZD 135 pp twin share, NZD 246 single (B&B)

#### BPac09 Post Tour Accommodation (Victoria Falls) - if required

Phezulu or Bayete Guest Lodge Deluxe Room: NZD 166 pp twin share, NZD 223 single (B&B)

## DETAILED TOUR INFORMATION:

### *In a nutshell*

- A true African experience - wild and free!
- All inclusive trip with cultural experience, adventure and wildlife.
- Victoria Falls, Moremi Game Reserve, Savuti & Chobe National Park

### *Why travel with Sunway Safaris*

We understand that there are several options available to you when choosing your African safari. We also know that you want to make the most informed decision about your safari, what you get, what's included and what you see and experience. So these are just a few of the Sunway qualities and facts:

- **Small groups** – by travelling with a maximum of 12 people, you can witness Africa and have first-hand contact with this amazing continent and its people without being a negative influence. This has been a key factor in our continued success. Our trips appeal to a wide demographic of traveller. Our clients range in age from 25 to 65+ with the average being 45. The range of travellers gives a variety of perspectives which adds to the experience of each safari.
- **2 Sunway tour guides** – group leaders are the key to any safari. On a Sunway safari you will travel with 2 qualified and registered field guides (Field Guides Association of SA). Two guides as crew, not a guide and a driver, means interesting trips with maximum knowledge and information. Our guides have a passion for Africa, her people and wildlife, and they love nothing more than sharing their knowledge with you.
- **Guaranteed departures** – departure dates on each itinerary shown as bold are guaranteed departure dates. All other departures operate with a minimum of 4 clients.
- **All-inclusive price** – when we travel ourselves, we always feel that if we're in a country we should find and see the best it has to offer. So when planning the Sunway routes, we ensure that each trip provides the best inclusions and experiences. For example, if you go to Botswana – you have to visit the national parks in an open 4WD – it is the essence of the Botswana wilderness. If you tour Zambia, then you must visit South Luangwa NP and do a game walk with a local scout. When booking on a Sunway Safari there are no hidden costs. All of the entrance fees are included, and a wide range of activities, and most meals. We have included many highlights in our tours, so that you will see and experience the highlights without having to pay extra when you get there. So when you decide on which safari company to book with, look carefully at what you're actually getting. You may only visit a place once, make sure you get the most out of it.
- **Safety** – our fleet of vehicles are custom built to ensure comfortable and safe touring. Each is constructed, by an authorised passenger vehicle builder, to the latest safety requirements, with a safety shell, and every seat has a lap belt. This gives you peace of mind when travelling with Sunway Safaris on the often demanding African roads.
- **Good2Go** - Our commitment to sustainable & responsible tourism is reflected in our low impact travel style where all we take is photographs and all we leave is our footprints. Being an African company, we have the grassroots contacts to make a real difference in the lives of the people whose lands we visit. On each itinerary in the brochure you'll find this symbol which highlights just one of the sustainable travel initiatives that we support.



- **Solo Travellers** – going it alone won't make your holiday more expensive; our reservations staff will match you up with another same-gender traveller to keep your holiday affordable. If however you request a single room or tent these are available, with a price supplement
- **Experience** - we have more than 28 years' experience planning tours throughout Southern Africa. As such, our itineraries and routes have been perfected over many years ensuring that your tour will run smoothly. We visit the highlights of Southern Africa but ensure that you do not follow the well-trodden tourist track. All of us at Sunway Safaris have extensive travel experience in Africa, and throughout the world. Being adventure travellers ourselves, we know how to plan trips that give you a broad experience of the countries that you will visit.
- **Based in Africa** - probably the most important part of a Sunway safari is that we are an African company with offices in South Africa and Botswana. We live in Africa, we travel in Africa and it is our passion for this amazing continent that makes Sunway your best travel option.
- **Age Policy** - On all scheduled tours, we accept children 12-17 with accompanying adult. We have no upper age limit. Clients older than 65 years of age at the time of travel require a medical certificate stating the client is fit and healthy to join an adventure travel group tour. We have many clients over 65 years of age, who are perfectly capable of enjoying every aspect of a Sunway tour, both accommodated and camping. For more details contact [newzealand@sunway-safaris.com](mailto:newzealand@sunway-safaris.com) / [info@indafrica.co.nz](mailto:info@indafrica.co.nz).

### **Local Payment**

- There is no local payment on this tour

### **Recommended reading**

Before you travel you might want to read any of the following books. While not specific to the Sunway tour you will join, they do provide some background understanding of the countries you will be visiting.

- #1 Ladies Detective Agency by Alexander McCall Smith (Fictional story of life in Botswana)
- Trees of the Okavango by Veronica Roodt (A reference book with traditional uses and myths)
- Okavango: Jewel of the Kalahari by Karen Ross (A comprehensive description of the Delta ecology)
- Don't run whatever You Do by Peter Allison (A guide's perspective of Botswana lodge life)
- Okavango: Africa's Last Eden by Frans Lanting (A coffee table book of photography)
- Newman's Birds of Southern Africa by Kenneth Newman
- Sasol Birds of Southern Africa by Ian Sinclair, Phil Hockey, and W.R. Tarboton
- The Safari Companion: A Guide to Watching African Mammals Including Hoofed Mammals, Carnivores, and Primates by Richard D. Estes and Daniel Otte
- Field Guide to Trees of Southern Africa (Field Guides) by Braam Van Wyk, Keith Coates Palgrav, and Piet Van Wyk

### **Shopping**

- Craft shopping for carvings, batiks, paintings and clothing is best in Victoria Falls which has a wide variety of curios. Botswana has beautiful grass weavings but these are available mostly at curio shops as there are hardly any craft markets in Botswana.

### **Food**

- The majority of meals on this safari are provided by the lodges.
- We do cater for special dietary requirements (e.g. vegetarian or allergies.)
- All beverages will be for your own expense. We will not supply bottled drinking water although it is available at many shops on tour.

### **Difficulty**

- Anyone who is generally active and in good health should enjoy this trip.
- Full itinerary with a couple of long driving days. The road conditions through the wilderness areas a very poor and our progress can at times be slow and dusty. Remember to hold on at all times and enjoy the ride!

### **Things you should know**

- Includes park entrances, game drives and the Okavango Delta excursion.
- As this tour spends a large amount of time in wildlife areas it is essential that clients adhere to the tour leaders (and local guides) instructions regarding interaction with wildlife, camp safety and game walk/drive rules.
- You will need a valid passport and visas for entry into Botswana & Zimbabwe. Your travel agent will be able to provide you with the Visa requirements for the passport you are travelling on or alternatively contact [newzealand@sunway-safaris.com](mailto:newzealand@sunway-safaris.com) for more information.
- Luggage, please pack to a limit of 12kgs in a soft sports tog bag. Also bring a daypack for walks and keeping in the vehicle. On the Accommodated Adventures & Classic Journeys, all bedding is provided, and you will not be required to bring a sleeping bag or pillow. At most accommodation establishments, towels will be provided, but it is always a good idea to bring a small travel towel for the beach or swimming pool.
- We recommend that you bring Euro or US\$ for personal expenses on this trip but please note that foreign currency will need to be changed into Botswana Pula as shops, restaurants and market vendors only accept BWP. Expenses in Victoria Falls can be paid in US\$ and major credit cards can also be used for optional activities. Traveler's cheques can be changed in Victoria Falls, Kasane and Maun (although in Zimbabwe travellers cheques attract a very high commission). See the Sunway tour dossier for approximate costs of drinks and meals etc.

### **Common questions about this trip**

1. **Can I buy camera memory cards?** Memory cards and other photographic accessories will be available several times on tour. A camera with a zoom lens from wide angle to telephoto, 35-300mm, is advisable to capture both scenic and wildlife shots. Each vehicle is fitted with a 12/220V inverter – this can be used while the vehicle is running (but will drain the vehicle battery if left plugged in), so this should only be relied on for limited charging of camera batteries and we recommend you bring a 2<sup>nd</sup> battery. except our exclusive use camp on the Private Concession near Moremi.
2. **Is it safe?** Botswana is relatively safe and your guide knows the countries intimately and will endeavor to show you the best parts while looking after you. In the wild areas your guide will brief you on the necessary precautions, follow this advice and you will be fine. Be aware of your personal belongings and you will have a great trip!
3. **Do I need malaria tablets?** Yes, the trip passes through malaria areas and prophylactics are recommended.
4. **What do I need to bring?** All details are covered in our general tour briefing (available from [www.sunway-safaris.com](http://www.sunway-safaris.com) on home page) but the basics are: - comfortable clothes for warm days and cool evenings, walking shoes, flash light, a raincoat, hat and sunglasses, swimsuit, a small pair of binoculars also comes in very handy and most importantly - a sense of adventure!

